



ELECTRONIC EQUIPMENTS



DATA COLLECTOR

Description:

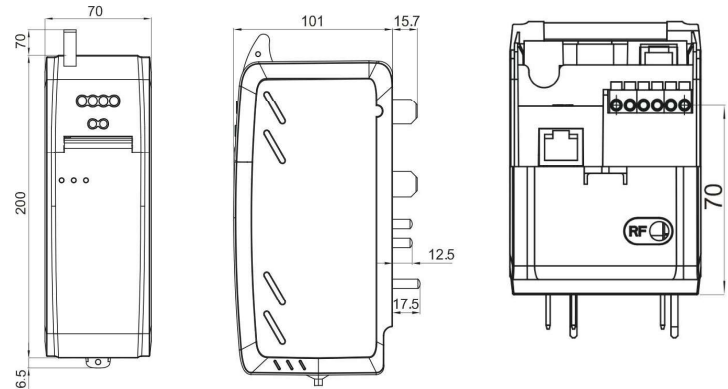
Data collector which adopts ARM9 + Linux architecture design, a key equipment which connects master station with smart meter in AMI system. It can be applied to multiple systems, like cluster metering control system, standard AMI system and network prepayment system.

Highlights:

- Local maintenance of Zigbee module, HHU reading or parameter configuration
- Easy installation, multi-installation ways, plugs type/Rail type/Fixed type.
- Remote or local updating software
- Plug in type of GPRS module, easy for site maintenance and change
- Meter Cover open detection and record when power fails, the data collector will transmit it to master station



Description	Value
Voltage range	80V ~ 460V
Frequency range	50HZ ~ 60HZ
Voltage power consumption	≤5W
Power supply type	Switching
Operation system	LINUX
Data Base	SQLITE
Memory capacity	32 MB
Storage capacity	256 MB
Clock accuracy	0,5 S / día
Battery capacity	1200mAh lithium battery
Uplink communication	GPRS / 3G / Ethernet / WIFI / RS485 / SMS/ RF
Downlink communication	Zigbee / PLC / RS485
System capacity	18pcs single phase meter



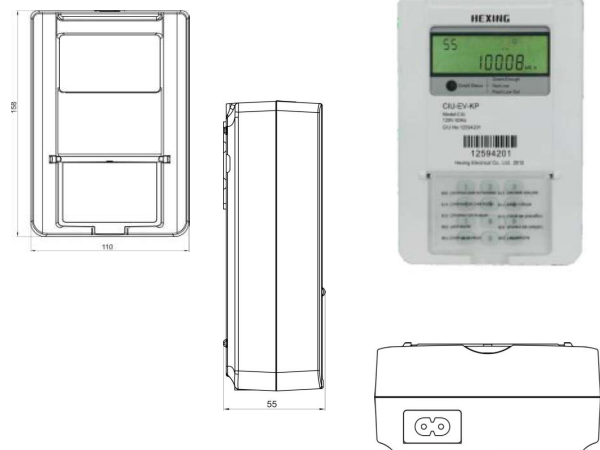
DISPLAY

Description:

CIU EV-KP is a customer interface unit with keypad for credit charging. It communicates with metering unit by MBUS or PLC for energy consumption and credit balance monitoring, credit limitation alarming and credit charging.

Main Functionalities:

- Balance display configurable
- Communication via PLC or MBUS, depending on the site
- Large digit LCD display, easy for reading
- 3×4 number and function keypad easy to operate
- Display readable without main power (RWP) for PLC
- Easy to match with meter, convenient for site installation
- Rechargeable when disconnected
- LCD backlights to increase readability in low light conditions (optional)



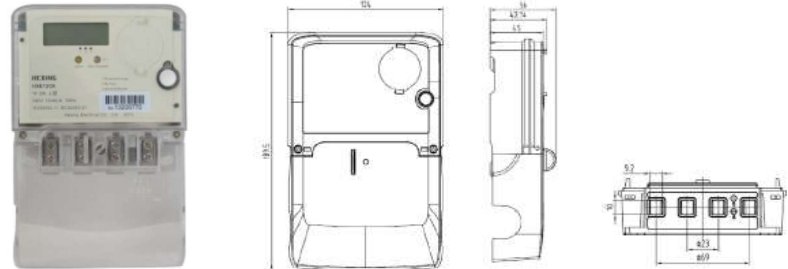
BUTTON METERS

Description:

Designed for residential customers of utilities, single-phase two-wire customers. It offers an excellent price-performance ratio.

Main features:

- Measuring energy without neutral (Optional)
- Registration energy security mode
- High accuracy and sensitivity
- Ultrasonic welding (Optional)



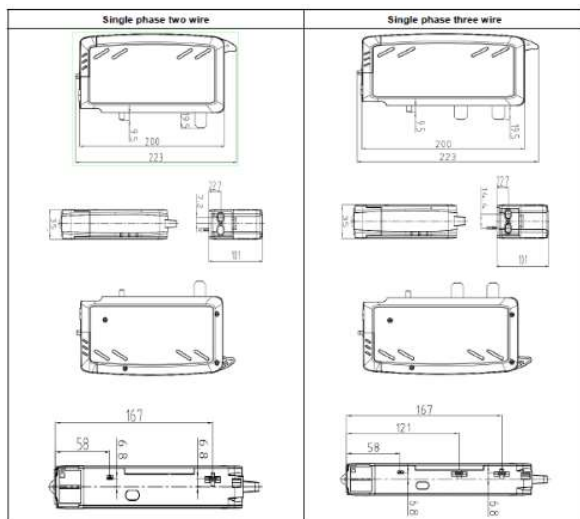
METER SLOT TYPE (DIN)

Description:

Designed for electricity utilities' residential, single-phase customers in single phase two wire or single phase three wire networks. It is installed into smart cluster metering and control system.

Main features:

- Plug in type, easy installation
- STS standard protocol ensures an open and secure operating system
- Internal switch relay for load demand control by configuration or remote communication
- Prepayment and post-payment mode switchable for users convenience



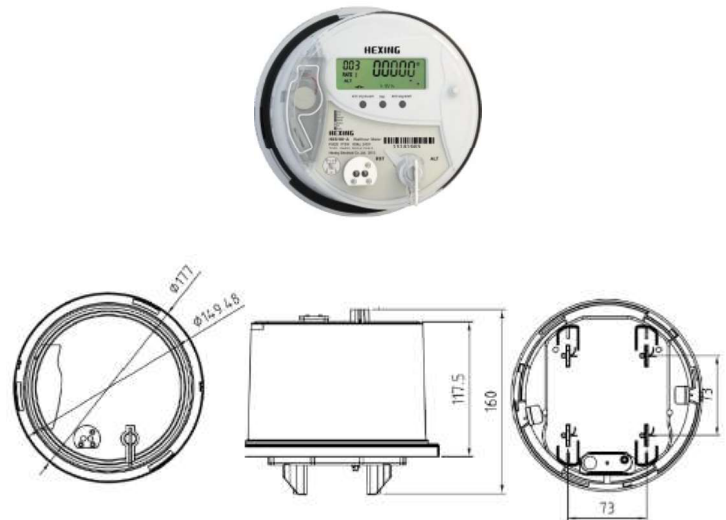
SOCKET METERS

Description:

HXS100, HXS100-1, HXS100-A, HXS100-A-1, HXS100-A-2, HXS200, HXS110-P y HXS210-P are a new generation of residential smart meter which complies with FM1S, FM2S and FM12S, it meets the CA0.5 of ANSI C12.20 standard (CA0.2 as requested). With an Onramp communication module, it supported by Hexing's AMI system software and provides energy consumption monitoring.

Main features:

- ANSI C12.20 CA0.5 (CA0.2 as requested)
- Time of Use metering
- Event Log
- Load Profile
- Maximum Demand
- Anti-tamper design
- Onramp AMI communication module
- Remote Disconnect Switch (200A max)
- Change battery without open meter cover



Description:

HXS300 y HXS300-1 are a new generation of three phase smart meter which complies with FM16S and FM9S, it meets the CA0.2 of ANSI C12.20 standard. With a GPRS communication module, it supported by Hexing's AMI system software and provides energy consumption monitoring.

Main features:

- Open Communication Protocol: ANSI Standard
- A communication GPRS module
- ANSI C12.20 CA0.2
- Load Profile
- Maximum Demand
- Anti-tamper design

