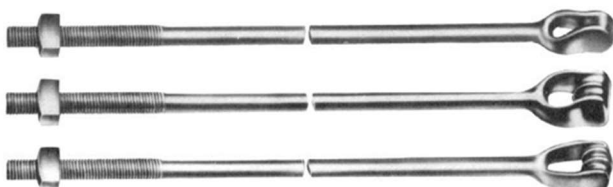
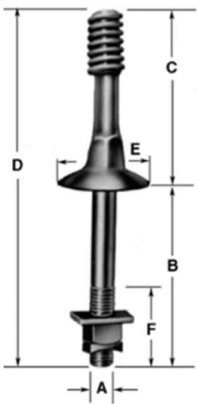




POLELINE HARDWARE

We provide most of the poleline accessories used in power distribution. Hot dip galvanized according to ASTM standards and galvanized coating required according to customer specification and standard.



OMEGA CLAMPS

Description:

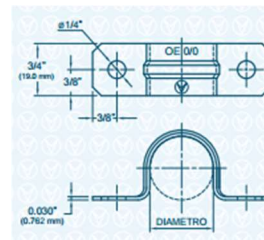
Ideal for electrical and construction use.

Characteristics:

- Band: Galvanized Carbon Steel
- Width: 0.750" (19.0 mm.)
- Thickness: 0.030" (0.762 mm.)

Pulgadas	Milímetros
1/2	13
1	25

Other sizes available upon request



COUNTER PRESSURE CLAMPS 2" ANCHOR TUBE

Description:

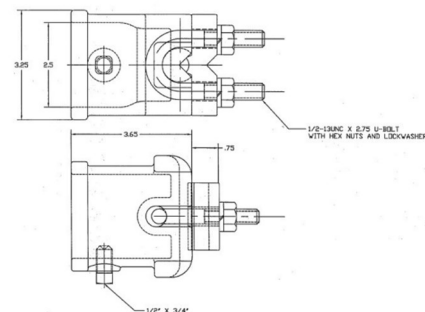
For supporting vertical wind pipe, malleable iron, galvanized, according to ASTM 123-78

Dimensions:

2" pipe, 5/16 wind

Characteristics:

- Malleable iron
- Hot-dip galvanized anti-corrosion protection
- Minimum wind diameter 7/16—5/16 feet
- Diameter: 50.8 mm
- Galvanized coating > 100 microns



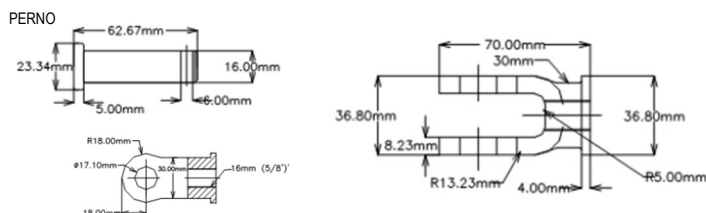
BOLT CLAMP

Description:

BOLT CLAMP, steel galvanized to ASTM153, with pin.

Characteristics:

- Hot rolled steel
- Hot-dip galvanized anticorrosive protection
- Galvanized coating > 87 microns



Tornillo (pulg.)	Separacion (pulg.)	Pasador (pulg.)	Resistencia Mecánica	
			KN	lb.
5/8	13/16	5/8	60.3	13,550

SQUARE WASHERS
Description:

To prevent nut penetration. Galvanized steel, according to ASTM 123-78. Used instead of circular washers when a larger load-bearing surface is required. Most often used on wooden posts in connection with bolts.

Size	Orificio (pulg.)	Para Tornillo (pulg.)	Peso (Kg / Pcs)
2 1/4 X 2 1/4 X 3/16	11/16	5/8	0.110
2 1/4 X 2 1/4 X 3/16	13/16	3/4	0.106
2 X 2 X 1/8	9/16	1/2	0.057
2 X 2 X 1/8	11/16	5/8	0.054
3 X 3 X 3/16	13/16	3/4	0.218
3 X 3 X 1/4	13/16	3/4	0.271
4 X 4 X 3/16	13/16	3/4	0.371
4 X 4 X 1/4	15/16	3/4	0.489
4 X 4 X 1/2	1 1/8	1	0.982


SPRING LOCK WASHERS
Description:

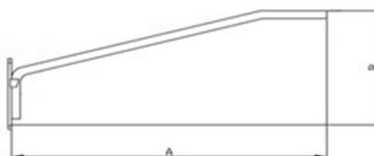
To prevent loosening of nuts. Galvanized steel according to ASTM 123 - 78, regular type.

Size	Para Tornillo (pulg.)	Peso (Kg / Pcs)
0.141X0.094	3/8	0.004
0.171X0.125	1/2	0.007
0.203X0.156	5/8	0.012
0.234X0.188	3/4	0.020


LIGHT ARM
Description:

Luminaire arms are used on metal or wooden pole, the body is made of galvanized steel tube. Hot dip galvanized under ASTM A153 standard..

Size (pulg.)		Peso (Kg / Pcs)
A	B	
42	18	6.00
72	24	8.00
144	47	14.00

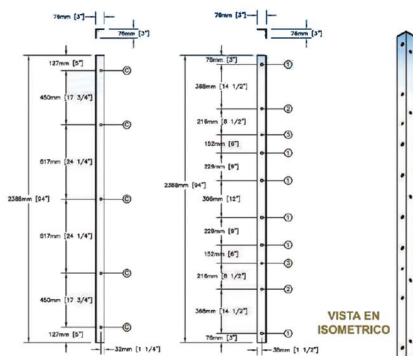
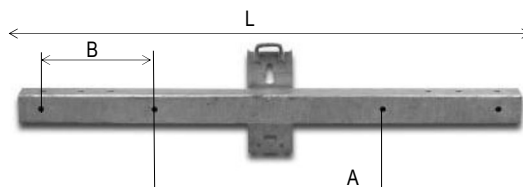


CROSSARMS

Description:

Hot-dip galvanized angle steel cross braces are used for the construction of support structures for overhead power distribution lines, and assembly of equipment in urban and rural areas. The raw material and manufacturing processes comply with ASTM A36 / A37 standards. A36m and ASTM A123.

Sección	L	A	B	Wt. Lbs / ea
4 x 4 x .150	3'6"	-	-	38
4 x 4 x .150	4'6"	-	15"	46
4 x 4 x .150	5'6"	-	15"	55
4 x 4 x .150	7'6"	36"	18"	72
4 x 4 x .188	7'6"	36"	18"	80
4 x 4 x .188	7'6"	36"	18"	103
4 x 4 x .3125	9'6"	36"	18"	152
4 x 6 x .3120	10'6"	36"	18"	217
4 x 6 x .3750	12'6"	48"	18"	298



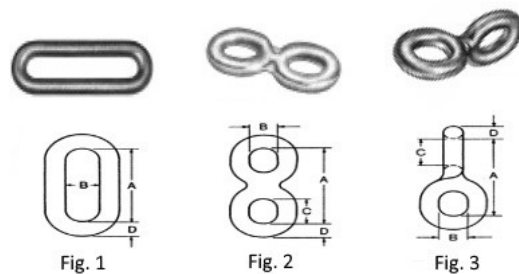
Descripción	Longitud mm (pulg)	Momento resistivo N.m (lb. Pie)	Peso aprox. kg (lb)
3" x 3" x 1/4" x 80" E. N.	2000 (80)	6051 (4462.98)	14.79 (32.6)
3" x 3" x 1/4" x 94" E. N.	2388 (94)	6051 (4462.98)	17.42 (38.4)
3" x 3" x 1/4" x 120" E. N.	3000 (120)	6051 (4462.98)	22.24 (49.02)
3" x 3" x 1/4" x 185" E. N.	4700 (185)	6051 (4462.98)	34.26 (75.54)
3" x 3" x 1/4" x 236" E. N.	6000 (236)	6051 (4462.98)	43.74 (96.43)

LINK IN EIGHT

Description:

Links are used to maintain proper tower spacing and connect associated hardware within an insulator string. Galvanized steel.

Descripción	Dimensiones (pulg.)				Peso (Lbs)
	A	B	C	D	
Fig. 1	2 1/4	1	-	1/2	30,000
Fig. 1	3 1/4	1	-	5/8	40,000
Fig. 2	3 3/8	7/8	1 1/8	9/16	30,000
Fig. 3	3 3/8	7/8	1 1/8	9/16	40,000



STAINLESS STEEL STRAPPING

Description:

Non-magnetic stainless steel strapping (banding) is used flexibly for any hose size, in conjunction with a buckle (clip) and fastened with a banding tool.

Use:

Mainly used for insulation, mounting of traffic signs, commercial signs, decorations, etc.

Package: kraft paper box or plastic bag Common sizes are as follows:



Fleje		304SS	304SS	316SS	316SS
Pulg	mm	Grozor	Grozor	Grozor	Grozor
3/8"	9.5	0.4	0.6mm	n/a	0.4
1/2"	12.7	0.4	0.7	0.5	0.8
5/8"	16.0	0.4	0.7	0.5	0.75
3/4"	19.0	0.4	0.7	0.5	0.8
1"	25.4	1.0mm	1.2mm	n/a	n/a

GALVANIZED STEEL SHEET STRIPPING

Description:

Sheet metal strapping is used in the construction of support structures for power distribution lines and some equipment installation structures, for the reinforcement and stability of crossarms. Hot-dip galvanized steel with a thickness of 100 u, according to ASTM 153. NEMA dimensions.

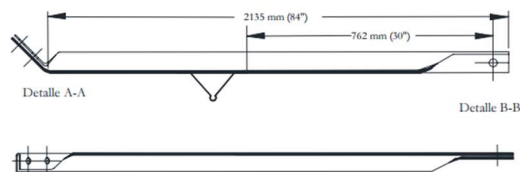


Dimensiones	Peso aprox. Kg. (lb.)
De 32" (81 cm)	0.96 (2.10)
De 36" (91 cm)	1.23 (2.89)
De 28" (71 cm)	0.53 (1.17)

GALVANIZED STEEL DIAGONAL STRIPPING

Description:

Diagonal straps are used in the construction of support structures for power distribution lines and structures for the installation of equipment, for the reinforcement and stability of crossarms. Hot-dip galvanized steel with a thickness of 85 u, according to ASTM A-123. Angle bar.



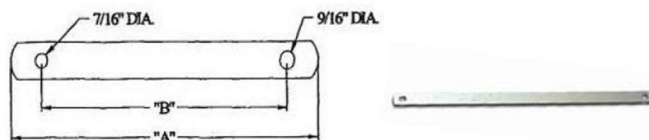
This hardware can be manufactured according to the client's dimensional requirements.

Descripcion	Dimensiones	
	mm	Pulg.
Perfil L	45 x 45 x 45	1 3/4" x 1 3/4" x 3/16"
Longitud	2135	84
Orificio (Pequeño)	14	9/16
Orificio (Grande)	18	11/16
Extremo (45°)	75	3

GALVANIZED STEEL VERTICAL STRAPPING

Description:

Vertical straps are used to support cross arms carrying tangent loads. They have rounded corners at the ends to prevent damage and reduce the possibility of injury. Hot-dip galvanized steel according to ASTM 153.

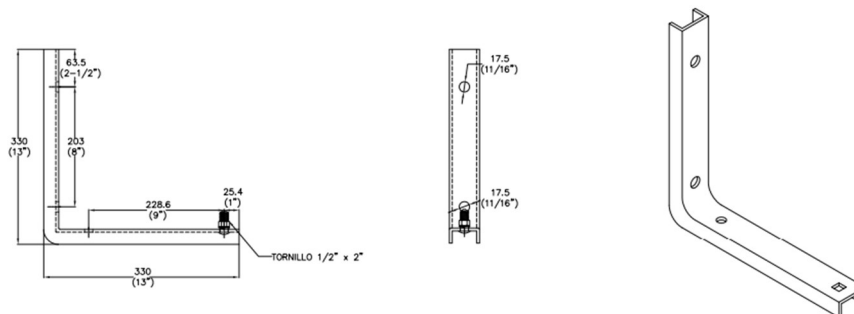


Size (Pulg.)	Longitud A (Pulg.)	Longitud B (Pulg.)	Peso Kg / Pcs
1 1/4 x 1/4	24	22	0.96
1 1/4 x 1/4	26	24	1.05
1 1/4 x 1/4	28	26	1.14
1 1/4 x 1/4	30	28	1.23
1 1/4 x 1/4	32	30	1.28

SINGLE POST SUPPORT UNIT

Description:

Galvanized steel according to ASTM 153-78. Approximate thickness 4.8 mm (3/16"). Includes 1/2" x 2" carriage bolt with nut and washer.

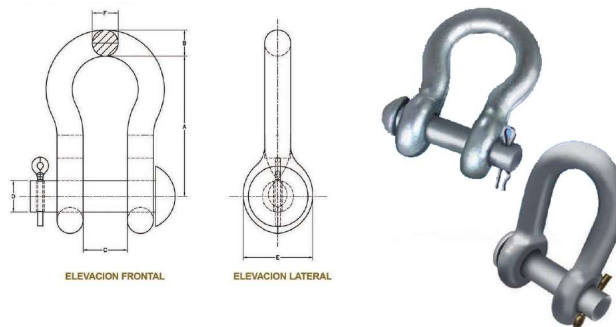


5/8" STRAIGHT NORMAL SHACKLE

Description:

Hot-dip galvanized steel shackles are used to fasten insulator chains to crossarms on power distribution and sub-transmission lines and to transmission line towers.

A mm (pulg.)	B mm (pulg.)	C mm (pulg.)	D mm (pulg.)	E mm (pulg.)	F mm (pulg.)	Peso. (kg)	Tensión máxima (lb)
82.55 (3 1/4")	15.88 (5/8")	25.4 (1")	19.05 (3/4")	44.45 (1 3/4")	15.88 (5/8")	1.66	40,000



BUCKLES FOR STRAPPING

Description:

Stainless steel buckles for securing straps.

Parte No.	Fleje		Hebilla Grosor	Caja 100		Referencia x cartón	
	Pulg.	mm		Caja	Kgs	Pies cubicos	
BK-33	3/8"	9.5	0.7	25	11	1.2	
BK-34	1/2"	12.7	0.7	25	12	1.2	
BK-35	5/8"	16	0.7	25	15	1.2	
BK-36	3/4"	19	1.0	25	21	1.2	
BK-53	3/8"	9.5	1.0	50	15	1.3	
BK-54	1/2"	12.7	1.3	25	23	1.2	
BK-55	5/8"	16	1.3	25	22	1.4	
BK-56	3/4"	19	1.7	10	15	0.55	
BK-58	1"	25.4	2.5	10	13	0.55	



MOLDINGS
Description:

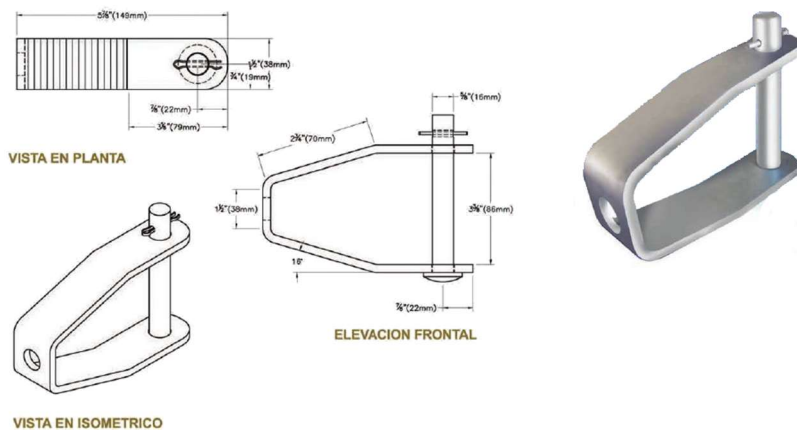
They are made of hot-dip galvanized steel sheet and are used to cover electric power cables as mechanical protection.

Descripción	Peso lb. (kg.)
Grande	15 (6.82)
Pequeña	7.94 (3.61)


INSULATOR HOLDER
Description:

They are manufactured from hot-dip galvanized steel under ASTM A153 standard and are used in the construction of low voltage overhead power lines to support the reel-type insulator in finishing structures, tangents and structures that support lines with a deviation angle.

Descripción	Espesor	Resistencia mecánica aprox. KN (lb.)	Peso Kg. (lb.)
Para aislador 1/4"	1/4"	8.8 (2,000)	0.84 (1.84)


ANCHOR TUBE SUPPORT
For anchor pipe (for 2" pipes)

Post plates and clamping fixture attach to pipe with set screws. Pipe not included. Mounted with 1/2" set bolts (not included)

Cat. No.	Std. Pkg.	Peso lbs.
540SGF	10	700
541SGF	10	500

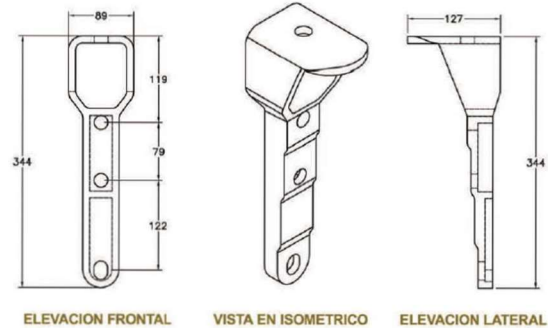


VERTICAL POST TYPE SUPPORT FOR INSULATOR

Description:

Post end supports for column type insulators are used in the construction of overhead power distribution lines to support the column type insulator at the top of the post.

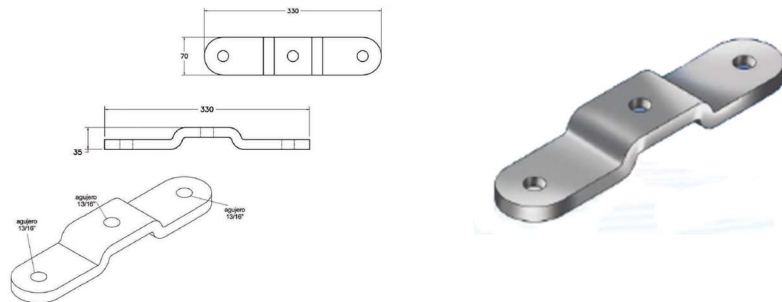
Descripción del producto.	Peso lbs. Kg.
Post tip support (bracket)	6.34 2.88



DOUBLE UNIT INSULATOR SUPPORT

Description:

The double-unit insulator support brackets are manufactured from hot-dip galvanized structural steel and are used for the assembly of the spike that in turn holds the spike-type insulator.



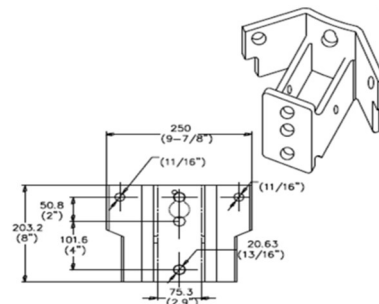
SINGLE PHASE TRANSFORMER SUPPORT

Description:

The supports for single-phase pole-type transformers are manufactured in galvanized steel under ASTM A123 standard, which are used in the mounting of 1 transformer of 5 - 100 KVA, the transformer is adjusted using bolts and square nuts.

Specs:

- Distance between drill holes to transformer (mm): 152.4mm (6")
- Thickness (mm): 6.35mm (1/4")
- Drill to post diameter (mm): 17.5mm (11/16")
- Diameter of upper drill hole to transformer (mm): 20.6mm (13/16")
- Diameter of lower drill bit to transformer (mm): 17.5mm (11/16")
- Zinc Layer Thickness (μ): 100



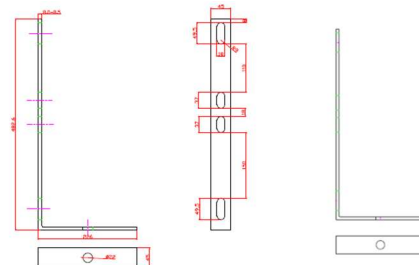
SIMPLE L-SHAPE BRACKET FOR JUNCTION BOX

Description:

They are used for the support and mounting of a wide variety of electrical equipment including surge arresters, cutouts, combiner units and terminals. All components are hot dip galvanized to meet ASTM A153 specification.

Size	Hole size
100mm x 8.0mm	40mm
450mm x 8.0mm	22mm

Other sizes available upon request.



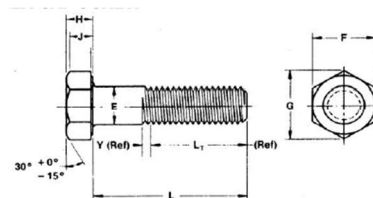
MACHINE SCREWS

Description:

Square and hex head machine screws are used for fastening crossarms, posts and other structures. Screws are supplied with square or hex nuts upon customer request. Hot dip galvanized in accordance with ASTM A153.

Square Head

Diámetro pulg	Size	Long. tornillo pulg (mm)	Long. rosca pulg (mm)	Peso Kg / Pcs
1/2	1/2"x1 1/2"	1 1/2 (38)	1 1/4 (32)	0.084
1/2	1/2"x2"	2 (50)	1 3/4 (44)	0.093
1/2	1/2"x2 1/2"	2 1/2 (63)	2 1/4 (58)	0.105
1/2	1/2"x3"	3 (75)	2 3/4 (69)	0.114
1/2	1/2"x4"	4 (100)	3 (75)	0.140
5/8	5/8"x5"	5 (125)	3 (75)	0.259
5/8	5/8"x6"	6 (150)	3 (75)	0.282
5/8	5/8"x8"	8 (200)	4 (100)	0.373
5/8	5/8"x10"	10 (250)	6 (150)	0.410
5/8	5/8"x12"	12 (300)	6 (150)	0.491
3/4	3/4"x8"	8 (200)	4 (100)	0.536
3/4	3/4"x10"	10 (250)	4 (100)	0.645
3/4	3/4"x12"	12 (300)	6 (150)	0.736
3/4	3/4"x14"	14 (350)	6 (150)	0.855
3/4	3/4"x16"	16 (400)	6 (150)	0.964



Hexagonal Head

Diámetro básico del tornillo pulg	E		F			G		H			J	L		Y	Descentramiento de la capa superficial de soporte
	Diámetro cuerpo		Distancia entre puntas			Dimensión angular		Altura			Altura de agarre	Longitud de la rosca para longitud del tornillo		Longitud de la rosca transición	
	Max.	Min.	Basic	Max.	Min.	Max.	Min.	Basic	Max.	Min.	Min.	< 6" Básico	> 6" Básico	Max.	
1/4	0.2500	0.2450	7/16	0.438	0.428	0.505	0.488	5/32	0.163	0.150	0.106	0.750	1.000	0.250	0.010
3/8	0.3750	0.3690	9/16	0.562	0.551	0.650	0.628	15/64	0.243	0.226	0.160	1.000	1.250	0.312	0.012
1/2	0.5000	0.4930	3/4	0.750	0.736	0.866	0.840	5/16	0.323	0.302	0.215	1.250	1.500	0.385	0.014
5/8	0.6250	0.6170	15/16	0.938	0.922	1.083	1.051	25/64	0.403	0.378	0.269	1.500	1.750	0.455	0.017
3/4	0.7500	0.7410	1 1/8	1.125	1.100	1.299	1.254	15/32	0.483	0.455	0.324	1.750	2.000	0.500	0.020
1	1.000	0.9900	1 1/2	1.500	1.469	1.732	1.675	39/64	0.627	0.591	0.416	2.250	2.500	0.625	0.026

SPACING SCREWS

Description:

They are used to secure two suspension cable clamps or other accessories on opposite sides of the utility pole. Each bolt is supplied with four attached square nuts. Hot-dip galvanized in accordance with ASTM A153.

Part. No.	Size	Long. tornillo pulg (mm)	Peso Kg / Pcs
HE-16O	5/8"x10"	10 (250)	0.536
HE-16P	5/8"x12"	12 (300)	0.618
HE-16Q	5/8"x14"	14 (350)	0.645
HE-16R	5/8"x16"	16 (400)	0.718
HE-16S	5/8"x18"	18 (450)	0.850



EXPANSION SCREWS

Description:

Fully threaded wedge link expansion bolt is designed for consistent performance in cracked and uncracked concrete. Suitable for normal weight concrete, lightweight concrete and concrete over steel deck.

Material:

Carbon steel, stainless steel.

Size:

1/4"x1 3/4" to 3 3/4", 5/16"x2" to 4 1/4", 3/8"x2 1/4" to 5",
1/2"x3/4" to 7", 5/8"x3" to 7", 3/4"x3" to 10"

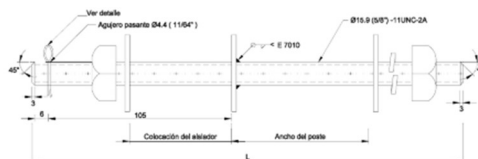


SCREWS FOR REEL TYPE INSULATOR

Description:

Used with reel-type insulator as a suspension point for the neutral line in single-phase primary networks, suspension of secondary networks in quadruplex and T-branches thereof. Hot-dip galvanized steel under ASTM-A153 standard.

Longitud	Uso del tornillo según su longitud
315 mm	Primaria en postes de 12 m Secundaria en postes de 9 m
540 mm	Secundaria en postes de 12 m

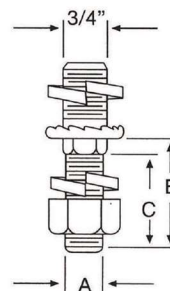


POST TYPE INSULATOR SCREWS

Description:

It is used to fasten the insulator to the angle crossarm or to the pole tip support, in distribution and subtransmission lines of electric power. Hot-dip galvanized steel.

Descripción	Dimensiones mm (pulg)			Peso aprox. Por 100 piezas kg (lb)
	A	B	C	
Perno aislador tipo poste 5/8"x 1"	15.88 (5/8)	25.4 (1)	25.4 (1)	0.04 (0.09)
Perno aislador tipo poste 5/8"x 1 3/4"	15.88 (5/8)	44.45 (1 3/4)	26.99 (1 1/16)	0.07 (0.15)
Perno aislador tipo poste 3/8"x 1 3/4"	19.05 (3/4)	44.45 (1 3/4)	26.99 (1 1/16)	0.07 (0.15)



STRAIGHT THIMBLE SCREWS

Description:

They are used in the construction of structures for the retention of transverse forces applied to the poles, together with expansion anchors and the retaining cable. In the termination of electric, telephone and telecommunications lines, I change their direction. The heads of the bars are of two types, single and double channel, with a wide radius that allows the preform to be tensioned without damaging it.

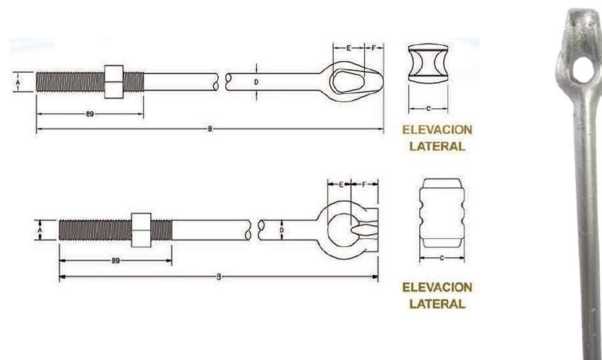
Hot-dip galvanized steel under ASTM A153 standard.

Simple Anchoring

A mm (pulg)	B mm (pies)	C mm (pulg)	D mm (pulg)	E mm (pulg)	F mm (pulg)	Resistencia mecánica KN (lb)	Peso kg (lb)
16 (5/8")	1829 (6')	44 (1 3/4")	16 (5/8")	17 (11/16")	32 (1 1/4")	71 (16,000)	2.95 (6.50)
16 (5/8")	2134 (7')	44 (1 3/4")	16 (5/8")	17 (11/16")	32 (1 1/4")	71 (16,000)	3.45 (7.60)
16 (5/8")	2438 (8')	44 (1 3/4")	16 (5/8")	17 (11/16")	32 (1 1/4")	71 (16,000)	3.98 (8.76)

Doble Anchor

A mm (pulg)	B mm (pies)	C mm (pulg)	D mm (pulg)	E mm (pulg)	F mm (pulg)	Resistencia mecánica KN (lb)	Peso kg (lb)
16 (5/8")	1829 (6')	30 (1 3/16")	16 (5/8")	19 (3/4")	21 (13/16")	71 (16,000)	2.97 (6.53)
16 (5/8")	2134 (7')	30 (1 3/16")	16 (5/8")	19 (3/4")	21 (13/16")	71 (16,000)	3.47 (7.63)
16 (5/8")	2438 (8')	30 (1 3/16")	16 (5/8")	19 (3/4")	21 (13/16")	71 (16,000)	4 (8.79)



MAGNETIC THREADED SCREWS

Description:

Aluminum alloy security screw operated by a magnetic key.

Size:

1/4" - 28, length: 30mm, 40mm, customized.



LAG SCREWS

Description:

They are used to attach equipment to utility poles and other wood structures. All screws are threaded and may have square or hex heads in accordance with ANSI/ASME B18.2.2.1. Hot dip galvanized to ASTM A153 Class 3.

Dimensiones	Std. Pkg..	Peso lbs. / C
1/4"x 2 1/2"	100	4
1/4"x3"	100	5
5/16"x3"	100	7
3/8"x2"	50	9
3/8"x3"	50	11
1/2"x2 1/2"	50	17
5/8"x4"	25	38
5/8"x5"	25	46

Other sizes available upon request



SELF-DRILLING SCREWS

Description:

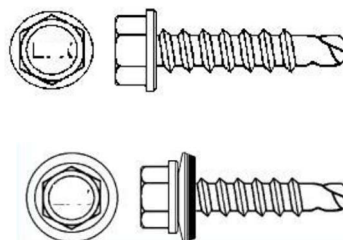
They are used for fixing high-strength structures, metal constructions, electrical installations, and general assemblies.

Hexagonal Head Bit Point

Size		Cantidad x Caja
# x pulgadas	mm	
# 6 - 20 x 1/2	3.4 x 13	10,000
# 8 - 18 x 1/2	4.2 x 13	10,000
# 10 - 16 x 1/2	4.8 x 13	9,000
# 12 - 14 x 3/4	5.5 x 19	6,000
# 14 - 14 x 1	6.3 x 25	3,000
# 14 - 14 x 2	6.3 x 13	1,500
# 16 - 5/16 x 2	8.0 x 50	1,000

Hexagonal Head Bit Tip with Washer

Size		Cantidad x Caja
# x pulgadas	mm	
# 12 - 14 x 3/4	5.5 x 19	6,000
# 12 - 14 x 1	5.5 x 25	4,000
# 12 - 14 x 1 1/2	5.5 x 38	3,000
# 14 - 14 x 3/4	6.3 x 19	3,800
# 14 - 14 x 1	6.3 x 25	3,000
# 14 - 14 x 2	6.3 x 50	1,500
# 14 - 14 x 3	6.3 x 75	1,000



Other sizes available upon request

NUTS

Description:

Hot dip galvanized.

Size	Std. Pkg.	Peso lbs / C
Cuadrada		
3/8"	100	3
1/2"	100	8
5/8"	100	13
3/4"	50	24

Size	Std. Pkg.	Peso lbs / C
Hexagonal		
3/8"	100	3
1/2"	100	8
5/8"	100	13
3/4"	50	24



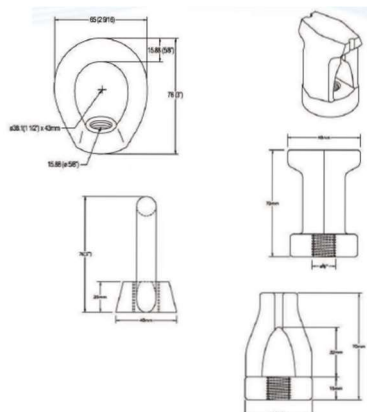
Other sizes available upon request

EYE NUTS

Description:

Hot-dip galvanized steel eye nuts are used in the construction of overhead power distribution lines in medium voltage finishing structures to hold suspension insulators "eye nut without channel" and in low voltage to finish the neutral conductor "eye nut with channel".

Size	Std. Pkg.	Peso lbs / C
1/2"	50	70
5/8"	50	70
3/4"	50	70
Single Nut		
5/8"	25	90
3/4"	24	90
Double Nut		
3/4"	25	100



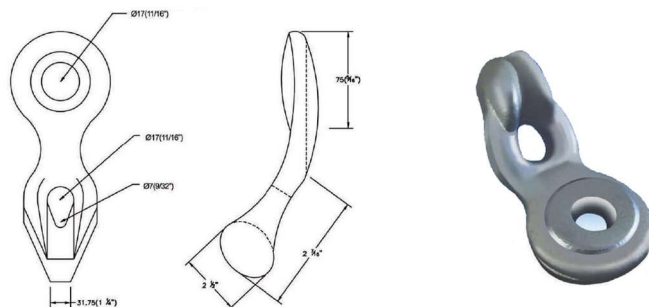
Other sizes available upon request

TILTED THIMBLE NUTS

Description:

Hot-dip galvanized steel inclined wind thimble nuts are used in the construction of overhead power lines to secure the guy wire to the pole.

Descripción del producto	Peso aprox. kg. (lb.)	Resistencia mínima KN (LB)
5/8"	0.70 (1.54)	60.27 (13.550)



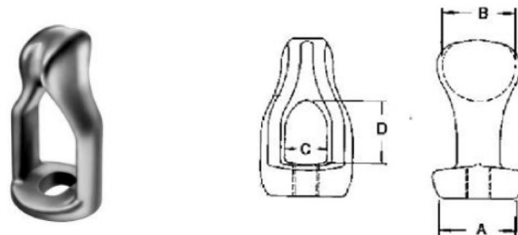
STRAIGHT THIMBLE NUTS

Description:

Straight thimble nuts are used for fastening through bolts to thimble eye bolts for straight head cables. Hot forged galvanised steel.

Size	A (pulg)	B (pulg)	C (pulg)	D (pulg)	Peso kg / Pcs
5/8"	1 1/2	1 1/2	7/8	1 3/8	0.340
3/4"	1 1/2	1 1/2	7/8	1 3/8	0.327

Other sizes available upon request



GROUND RODS

Description:

Designed to provide a path for a static discharge voltage (such as lightning) to dissipate to ground. We can supply:

- Lightning rod
- Chemical ground rods
- Copper coated steel ground rods.
- Soil improving powder
- Ground modules
- Chemical electrolytic ground poles.
- Galvanized copper ground rods
- Copper bonded steel tape
- Ground busbars, conductor clamps
- Copper coated steel wires
- Galvanized steel ground rods
- Exothermic welding molds

