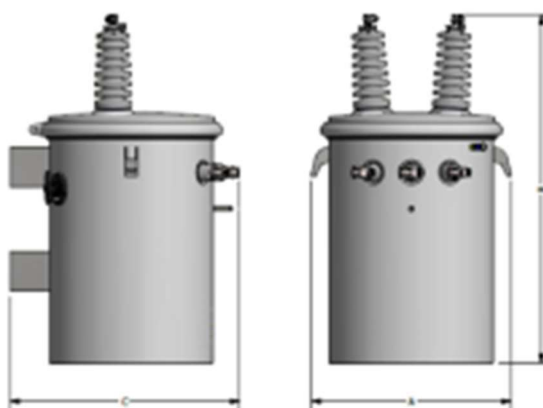
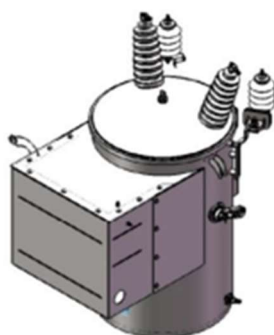
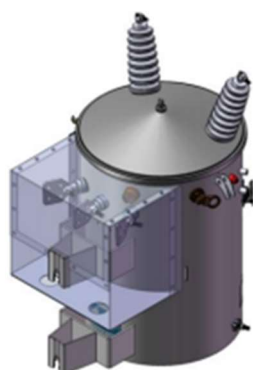




TRANSFORMERS

Distribution transformers from 10KVA to 750KVA single-phase and three-phase, pole-mounted and pad-type transformers, conventional and self-protected type transformers, designed according to the client's requirements and standards.



MEASUREMENT TRANSFORMERS

- COMBINED MODULE

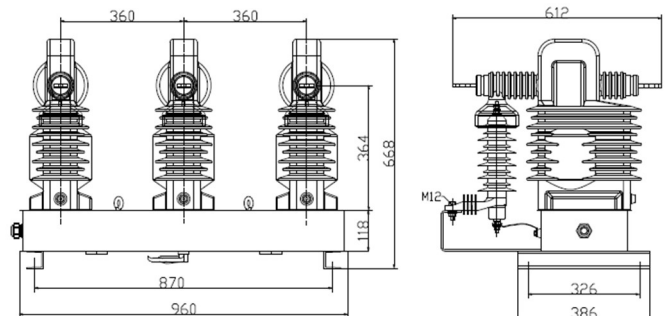
Description:

Combined transformers consist of three voltage and current transformers, all transformers are cast with electrical epoxy resin, high quality outdoor products. These are fully enclosed equipped with surge arrester (Provide disconnector if require), with excellent electrical and insulating performance, suitable for widely changing conditions.

The products have a lot of benefits such as high precision, multi-ratio, anti-sabotage, fire and explosion proof, maintenance free and etc. The products can be used in electric power grid with the system rating voltage up to 20kV and frequency of 50/60Hz.

- Excellent electrical performance and insulation
- Wide range of applications, broad spectrum, multiple transformation ratio;
- Excellent weather resistance, outdoor type, maintenance-free;
- High precision;
- Small size, light weight;
- Prevent electricity theft

Corriente nominal primaria (A)	Corriente nominal secundaria (A)	Clase de precisión	Carga nominal (VA)	Corriente nominal térmica - tiempo corto (kA / S)	Corriente nominal dinámico (kA)	Nivel de aislamiento nominal (kV)
5-10,5	5, 1	0.2S 0.5S	10-20	0.5	1.25	17.5/38/95 24/50/125
10-20,10				1	2.5	
15-30,15				1.5	7.75	
20-40,20				2	5	
25-50,250				3	7.5	
40-80,40				4	10	
50-100,50				5	12.5	
75-150,75				7.5	18.75	
100-200,100				10	25	
150-300,150				15	37.5	
200-400,200				20	50	
300-600,300				31.5	80	
400-800,400				31.5	80	
500-1000,500				31.5	80	
800-1600,800	31.5	80				



MEASUREMENT TRANSFORMERS

- CURRENT TRANSFORMER

Description:

Current transformer is cast from epoxy resin, fully enclosure structure. High permeability imported core or nanocrystalline silicon, the product has excellent electrical insulation properties. It can be used for connection of equipment for industrial and commercial loads under tropical climate conditions.

The bottom of the product can be set on-demand and transparent cover guard with small size, high pre-cision, multi-ratio, anti-theft, fireproof, maintenance-free, etc. It is suitable for current system with rated frequency of 50Hz or 60Hz energy measurement..

- Adaptable in width and range;
- Fully sealed structure, excellent insulation properties;
- Good protection properties, anti-tampering;
- Good performance in overload and low temperatures;
- High precision, high capacity.
- Temperature range: -5 °C - 45 °C
- Relative humidity: <=95%
- Altitude: <=2000 m
- Pollution Level: Class III
- Insulation level: Class A (105 °C)
- Nominal frequency: 50 Hz or 60 Hz
- Nominal insulation: 0.72 / 3 kV

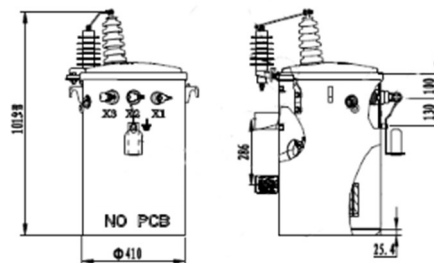
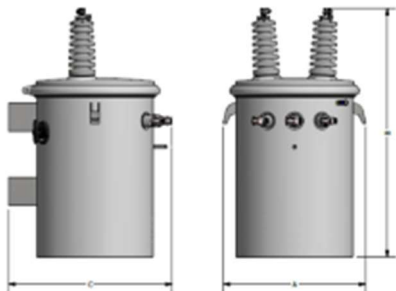


Corriente nominal primaria (A)	Corriente nominal secundaria (A)	Clase de precisión	Carga nominal de salida (VA)
200-400	5, 1	0.5S	10
200			
300			
400			
600			
800			
1200			

MONOPHASE TRANSFORMERS

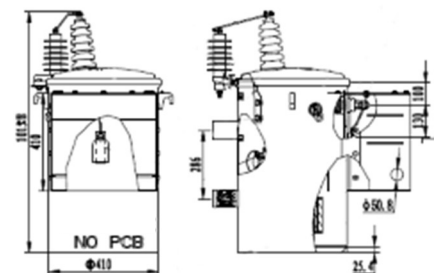
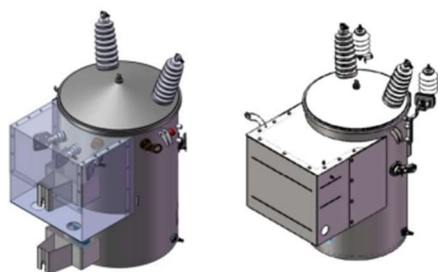
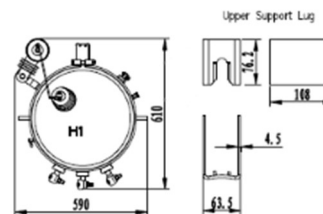
Description:

A self-protected transformer is one that has built-in overvoltage and overload protection elements from the design and manufacturing stage to protect it and/or isolate it from the grid in the event of a fault. They are mainly used in residential service loads and where electricity companies require load control.



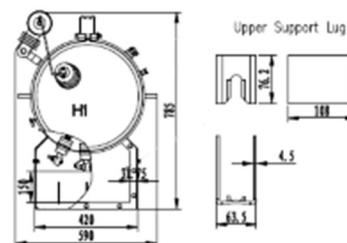
Self-protected

Rating (kVA)	HV (V)	Tapping Range (%)	LV (V)	Pérdida (W)		Dimensiones			Peso (kg)	
				Sin Pérdida	Pérdida completa	A	B	C	Peso Aceite	Peso Total
25	11547	± 2 * 2.5% u Otros	120-240 240-480 250-500 u Otros	80	290	1025	550	630	45	258
37.5	13800			105	360	1225	630	680	50	340
50	7967			135	500	1300	680	720	62	395
75	13200			190	650	1350	780	810	88	480



Self-protected Armored

Rating (kVA)	HV (V)	Tapping Range (%)	LV (V)	Pérdida (W)		Dimensiones			Peso (kg)	
				Sin Pérdida	Pérdida completa	L	W	H	Peso Aceite	Peso Total
25	33000/19000 30000/17320 20000/11547	± 2 * 2.5% u Otros	120-240 240-480 u Otros	66	448	620	700	1090	82	260
37.5				88	574	650	730	1195	97	325
50				110	700	680	760	1300	115	390
75				175	910	730	840	1340	140	460



SINGLE PHASE PAD MOUNTED TRANSFORMERS

Description:

The single phase pad mounted transformer comes equipped with a clamshell enclosure for easy opening and unrestricted access to connections. The versatility of the design allows for various protections and change configurations. It can provide multi-service options meeting the reliability and safety requirements of any distribution system. The units can be furnished in various classifications and in a wide range of unique configurations to meet customer needs.

Characteristics:

- Capacity from 10KVA to 500KVA, voltage from 137V to 34500V.
- Vector group II0, 60 Hz, long life.
- Low loss, low noise, high efficiency and low temperature rise.
- 3.0/4.0mm thick tank and lid.



THREE-PHASE PAD MOUNTED TRANSFORMERS

Description:

The three-phase pad-mounted transformer is designed for use in underground distribution systems. Its sealed High and low voltage safety compartments facilitate their operation and reduce the risk of accidents, making them Ideal for use in residential applications, tourist silos, hotels and other buildings. Pad-mounted transformers are placed Inside a closet with floors and locks, usually located outdoors.

These transformers come in two basic configurations: radial and loop, which are selected based on the type of circuit. where the transformers will be installed. The transformer uses aluminum or copper winding and is optimized to maximize efficiency and footprint.

